



Fight COVID-19:

Grab's Contribution to Support Food Supply Chain



Let's see a glimpse of
Grab's journey in Indonesia

We are SEA's 1st Decacorn!



>4 billion rides



>9 million
micro
entrepreneurs



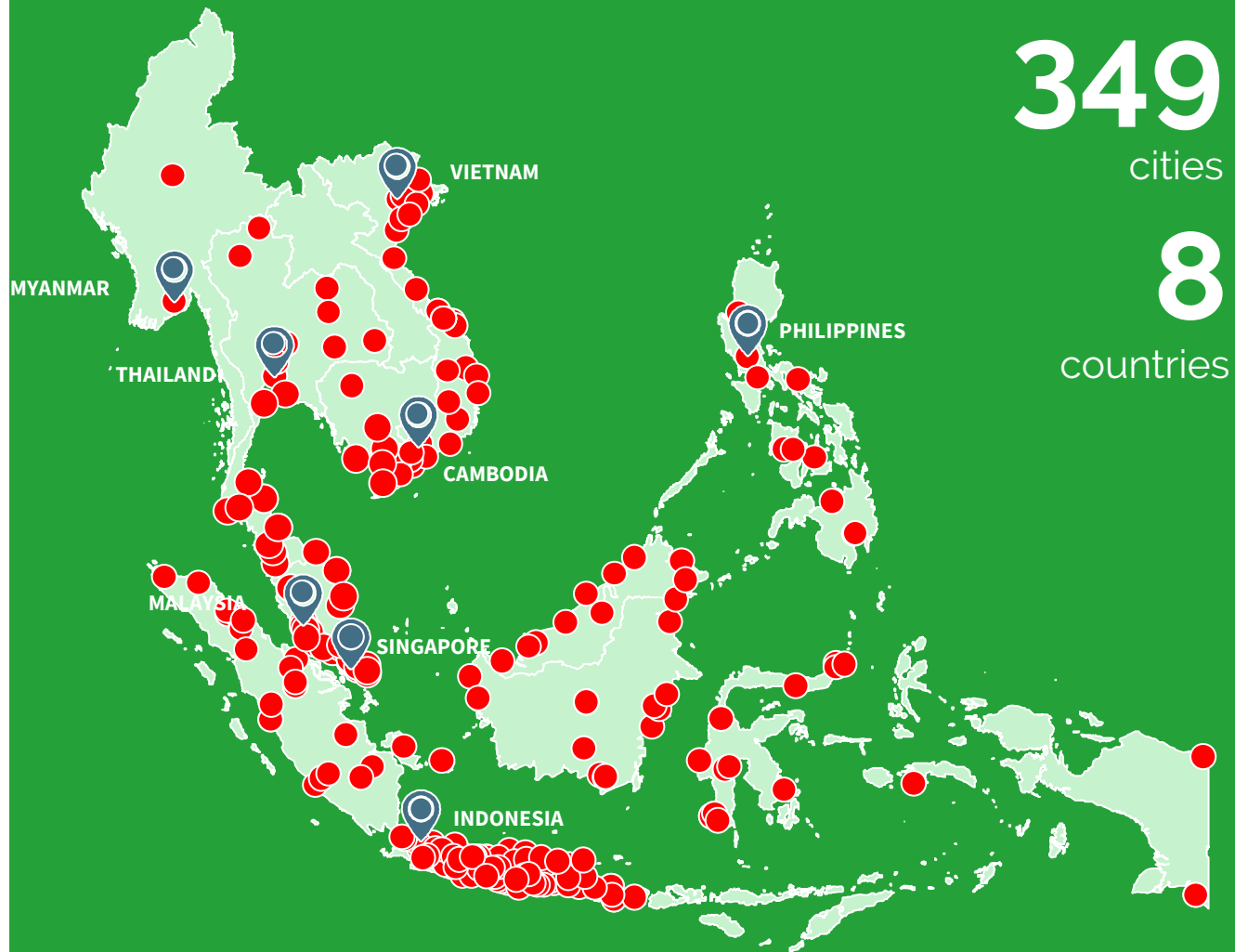
>185 million
application
download



Fastest-growing
regional food
delivery service



#1 FinTech
Platform



Serving millions of Indonesians from Sabang to Merauke

Sabang

24



officially serving 24 airports across the nation

12
cities

Jan 2017

234
cities

Now

Merauke



The biggest O2O network in Indonesia

505

cities & regencies



We connect millions to solutions that solve everyday problems, **to empower potential for all**



Octavia Ayu



Fajar Shiddiq



Ulfah & Lutfi



Dikki Wahyu



Acil Helmah



Enabling more than **5 millions** micro-entrepreneurs in **234 cities** in Indonesia

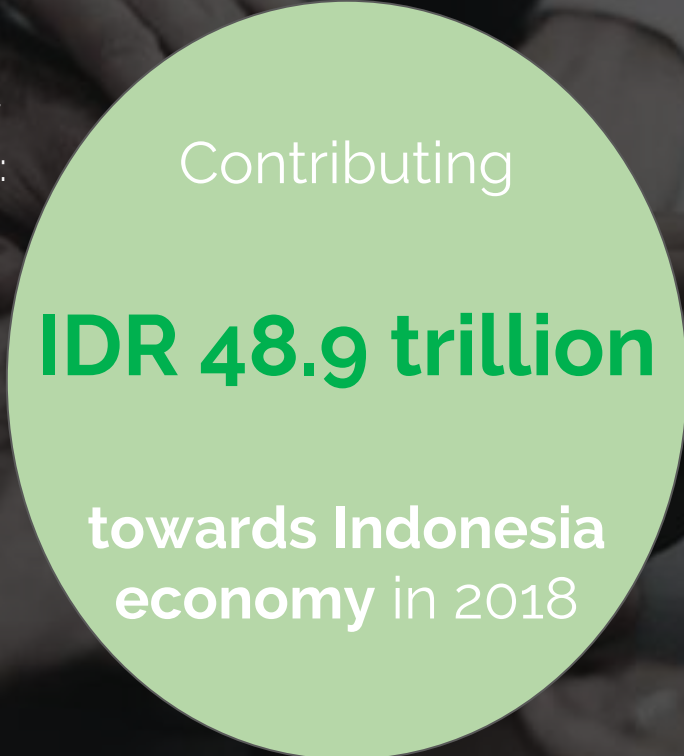


Amplifies economic value and utilizing technology as a Force of Good

Increasing average income of driver and merchant-partners:

- GrabCar** ↑114%
- GrabBike** ↑113%
- GrabFood** ↑60%
- GrabKios** ↑51%

All above average minimum wage in Jakarta of IDR3.5 mio

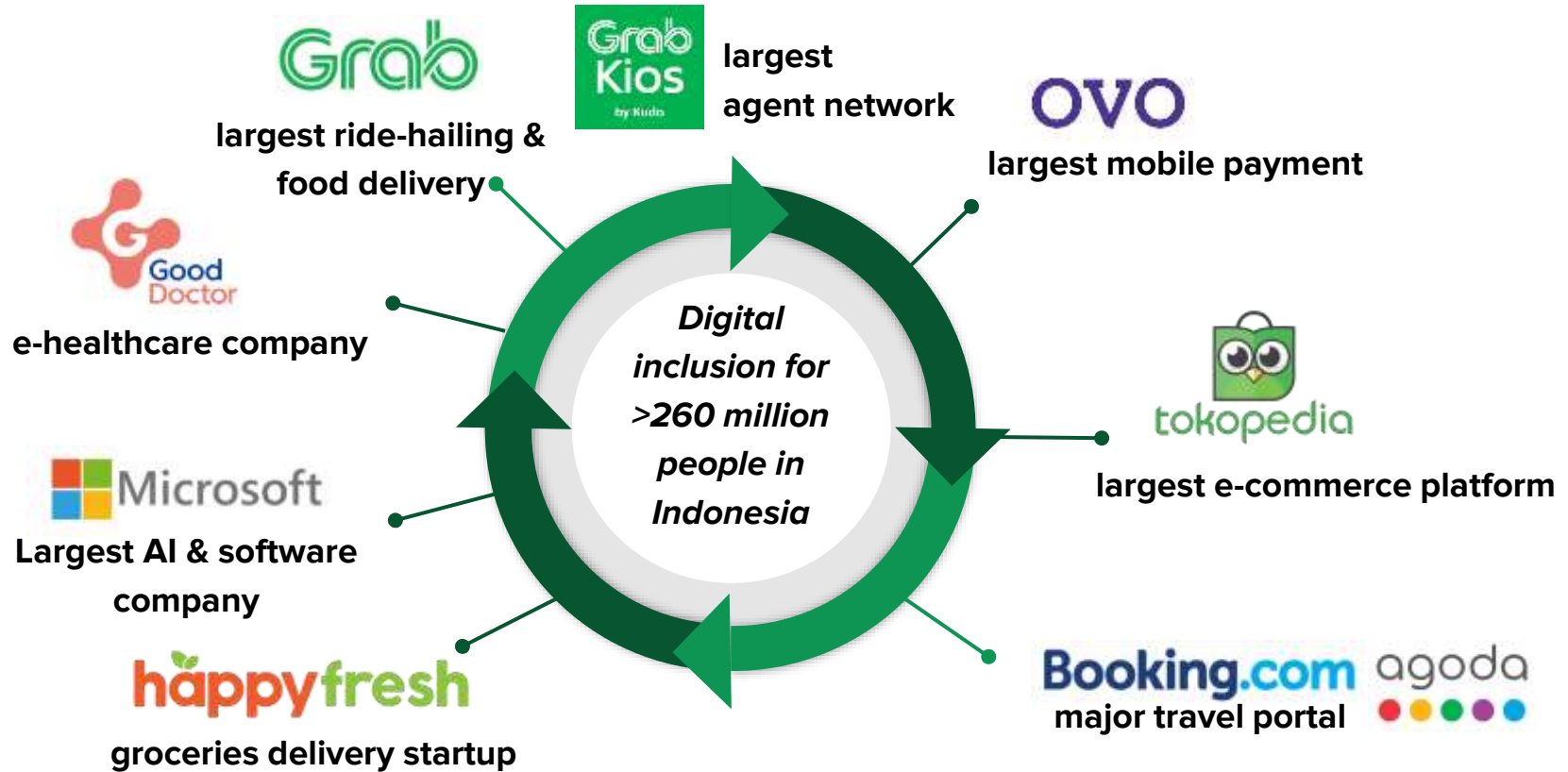


Helping to provide job opportunity for people:

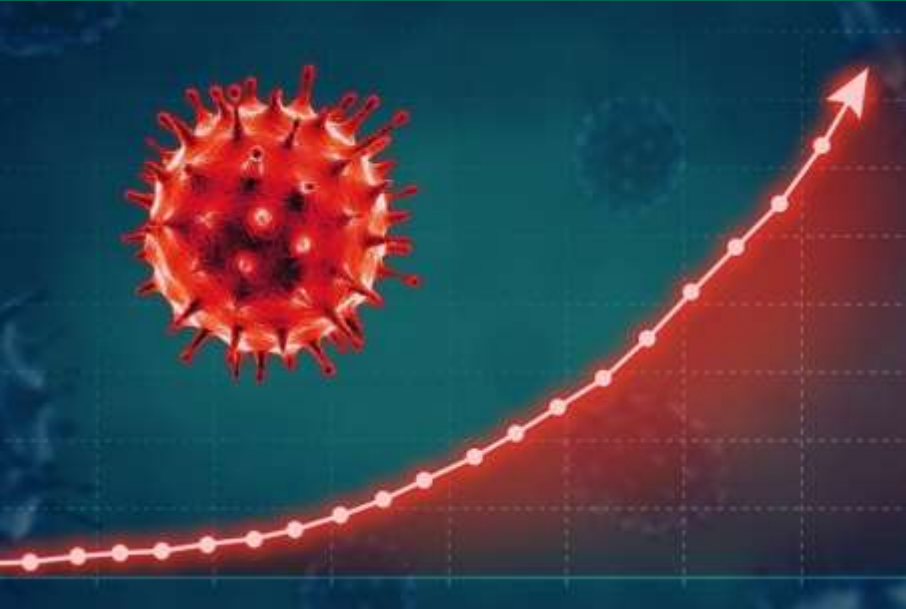
- 35% Grab driver-partners** did not have job prior joining Grab.
- 33% Grab driver-partners** have passed their productive age.

Providing equal opportunity for everyone

With collaboration we formed the largest digital ecosystem serving Indonesia



Current situation is challenging for everyone



Rising Rate in COVID-19 infection



Mass Scale Social Distancing from Government

A woman in a Grab uniform, wearing a high-visibility vest and a bag, is talking to a Grab driver on a motorcycle. The driver is wearing a helmet and a dark jacket. The background shows a street with other vehicles and trees. The entire image has a green tint.

Grab has committed

USD\$10 million

in ongoing and new initiatives to address
the COVID-19 pandemic in Indonesia

Our #1 priority is to ensure the safety and well-being of everyone on our platform

1

PROTECT OUR PARTNERS' LIVELIHOODS

2

PROVIDE DAILY ESSENTIALS IN SAFEST WAY

3

SUPPORT GOVERNMENT'S EFFORTS

As everyday everything super-app,
**Grab also contributes to support food supply chain
during this pandemic**



1

GrabFood

2

GrabFresh

3

GrabMart

4

GrabExpress
Nalangin

GrabFood

With the COVID-19 pandemic, food delivery has become a daily essential service for many.

To ensure safety and hygiene for our consumers, driver-partners, and merchant-partners, we launch new initiatives.



Introduced contactless delivery for customer and delivery partner safety



Worked with merchant-partners to enhance food preparation protocols and ensure food safety and hygiene



Implemented GrabFood Delivery Statement Card



Provided over 2000 non-contact thermometer guns to merchant-partners

GrabFresh

*Powered by
HappyFresh*

*We provide grocery
delivery service which
help consumers to
browse list of products
while staying at home.*

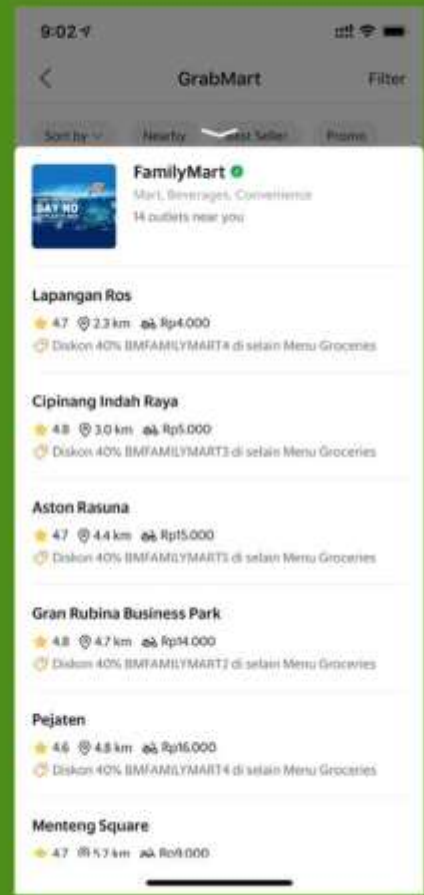
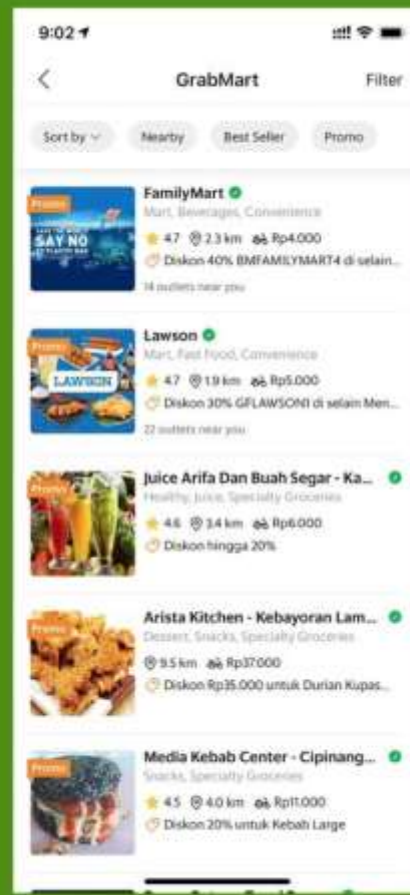
*Groceries are hand-
picked by our personal
shoppers – powered by
HappyFresh and will be
safely delivered by our
delivery-partners.*



GrabMart

We will expand **GrabMart**, our daily essentials delivery service across Indonesia.

Consumers can easily choose products from our partners on GrabMart service with cashless payment and all products will be delivered to home with our delivery-partners.



GrabExpress Nalangin

GrabExpress Nalangin available for consumers as on-demand concierge service, available on GrabBike fleet and GrabCar fleet for large purchases.

This would provide consumers to more access to livestock and food supplies during this pandemic with cash on delivery option.



GrabMart & GrabExpress Nalangin

Partnership with Ministry of Agriculture, major livestock and food supply partners

Grab is joining hands with the Ministry of Agriculture and major livestock and food supply partners to ensure that everyone can continue to have convenient access to livestock and food products, delivered via GrabExpress right to their doorstep.



A woman wearing a hijab and a face mask is holding a sign. The background is a blurred outdoor setting with trees and buildings.

TAPI TETEP
PAKE MASKER YA...

**We will get through this
together.**

A person wearing a full protective suit, including a helmet and a face mask, is holding a sign. The person is wearing a white jacket with the 'Grab' logo on the chest. The background is a blurred outdoor setting with buildings.

KITA SELALU SIAP
ANTER \neq KALO BUTUH