

TaniHubgroup

Unlocking Digital Agriculture



Rp
Rp
Rp



Access to Capital

Through our P2P platform,
We connect farmers with lenders
(individuals and institutional) with a profit
sharing scheme



Access to Market

TaniHub becomes the 100% off taker,
Distributing the harvest to B2B
And B2C buyers

Combined ecosystem
creates **higher yields**
and **higher income**

**Agriculture
For Everyone**





Trade Procurement

The Trade Procurement team conducts sourcing for commodities and engage directly with farmers to ensure adequate supplies and good quality to meet the demand.

Warehouse

Our team at warehouses (distribution centers) conducts a thorough process of grading, Quality Control (QC)/Quality Assurance (QA) and packaging to maintain quality of products.



Trade Procurement

The Trade Procurement team conducts sourcing for commodities and engage directly with farmers to ensure adequate supplies and good quality to meet the demand.

Warehouse

Our team at warehouses (distribution centers) conducts a thorough process of grading, Quality Control (QC)/Quality Assurance (QA) and packaging to maintain quality of products

Distribution

Our distribution team is supported by a strong fleet of transportation, which enables same-day delivery service.*

*Only for purchases before 11 a.m

Menyederhanakan rantai pasokan agrikultur untuk kebutuhan Industri Kuliner maupun Rumah Tangga

- ✓ Kepastian penyerapan hasil panen
- ✓ Pembayaran lebih cepat
- ✓ Harga Sesuai Pasar



Super market



Hotel, Restoran, Catering



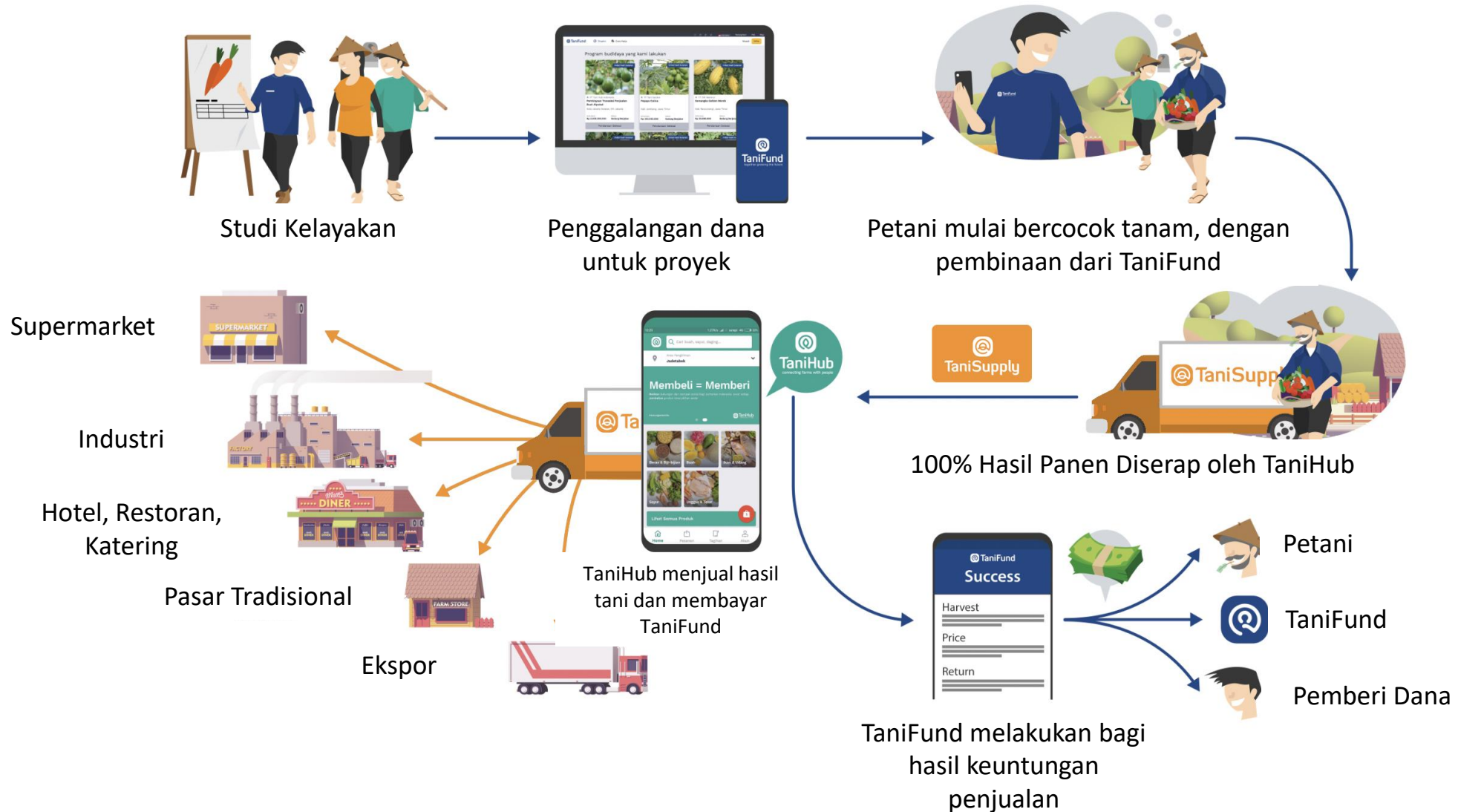
UMKM



Pembeli Individual (Kebutuhan Rumah Tangga)

- ✓ Proses pembelian yang sederhana dan transparan
- ✓ Barang diantar langsung ke tujuan
- ✓ Harga Kompetitif

Kami membangun ekosistem yang dapat mendukung pertumbuhan secara berkelanjutan





**We are facing
an extraordinary
circumstance**



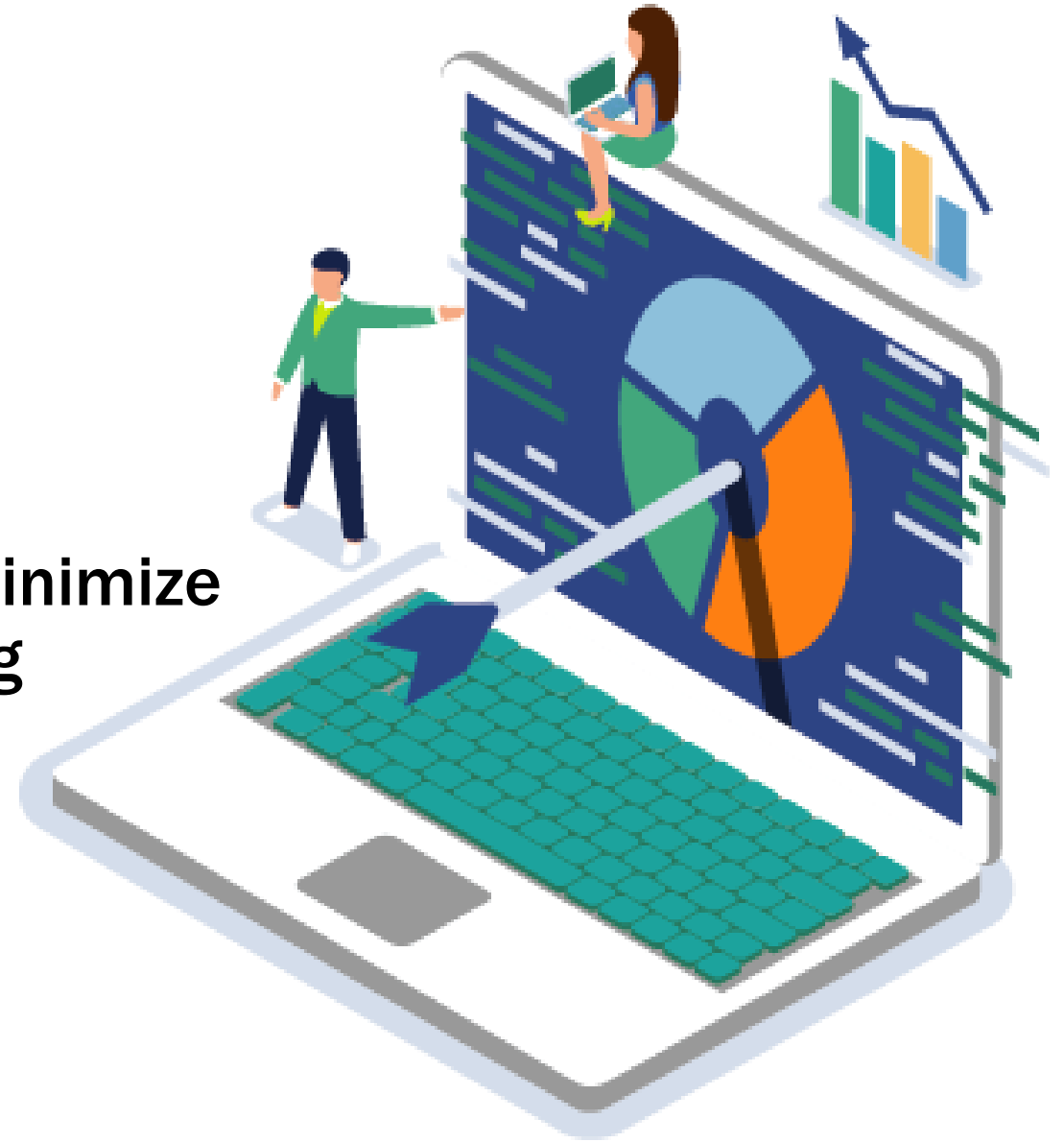
COVID-19 Crisis Impacts Everything & Everyone

How can TaniHub face this crisis as a company?



Our Strategy

1. Assess the risk.
2. Map our opportunities.
3. Formulate the best initiatives to minimize the impact from risk, while making the best of existing opportunities.



The Risks We Face

Communication

Supply Chain &
Infrastructure

Finance &
Investment

Commercial &
Marketing

Legal

Tech and Product

Human Resource &
Safety



There's also opportunity in the crisis

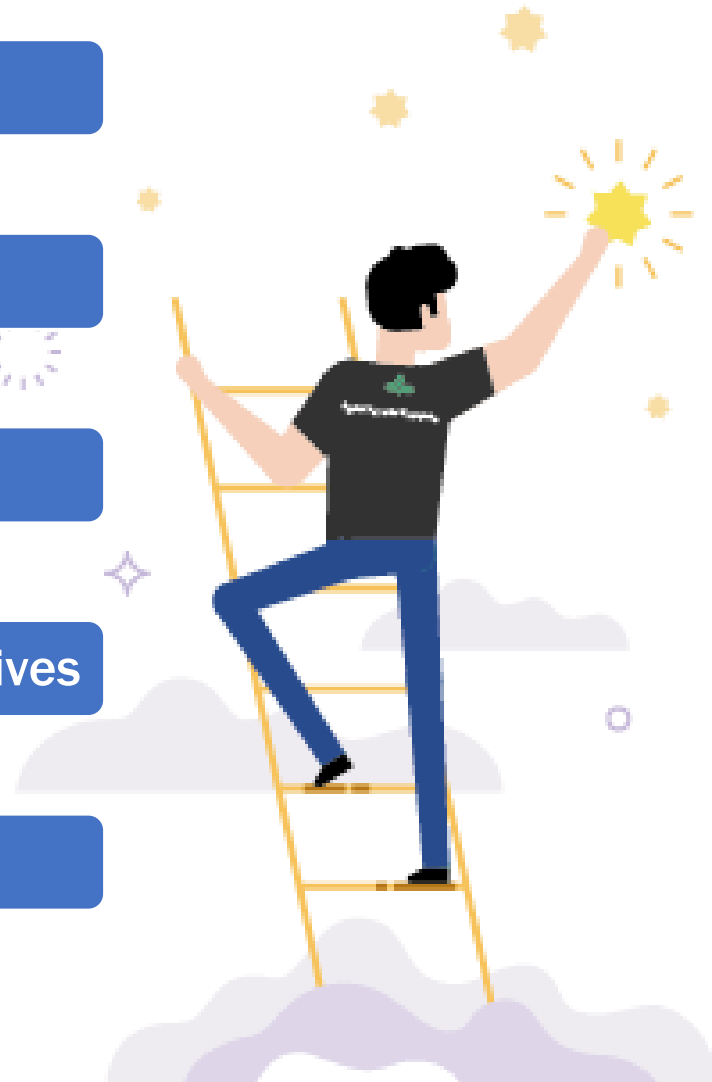
Enhanced business partnership

Identify key supplies that spike in demand and get access to supply

External Exposure

Shifting of resources (Material and Human Resource) toward online initiatives

Potential Growth in untapped/unexplored areas



The proof of the online opportunity



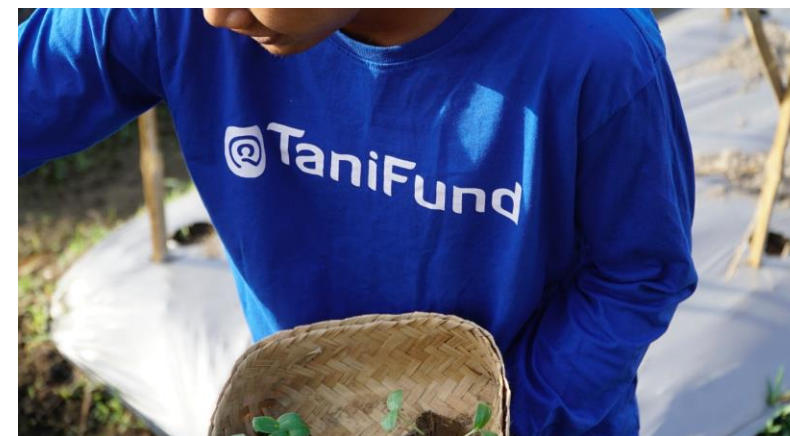
100%
Growth



+50K
New User

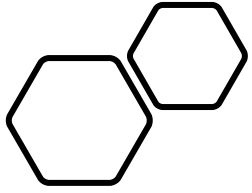


Aktifitas Petani di Ekosistem TaniHub



Panen dan Pengiriman Hasil Tani ke TaniHub



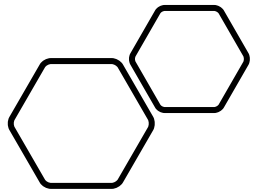


Proses Penerimaan Hasil Tani di Warehouse



**Penyimpanan
dan pengolahan
Hasil Tani di Warehouse**



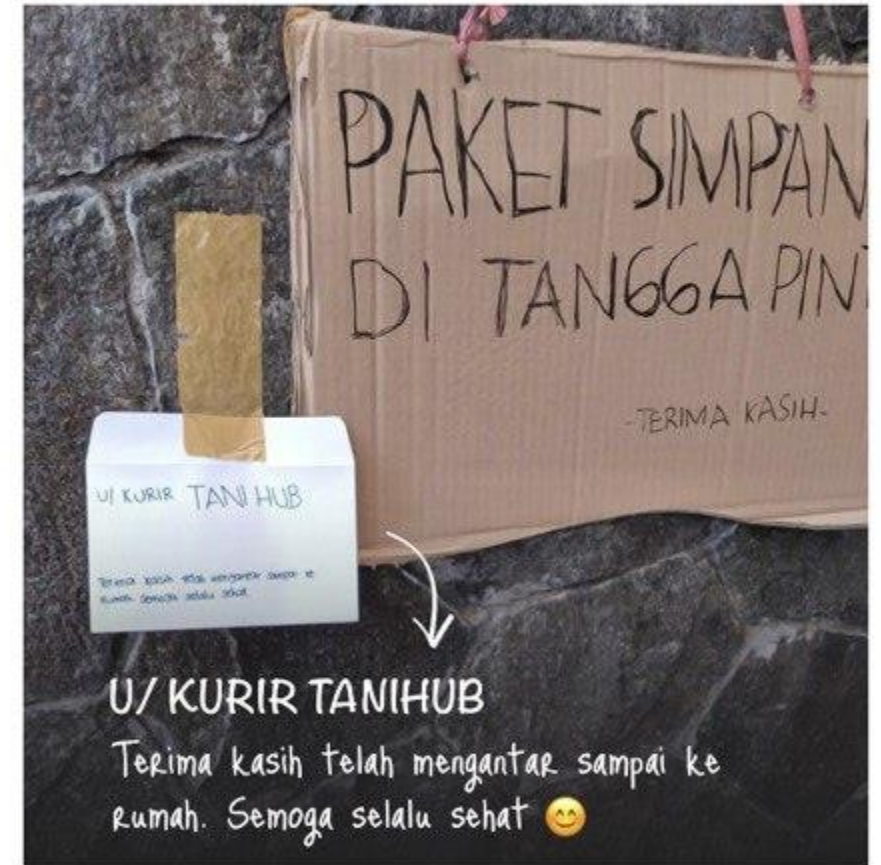


Persiapan Pengiriman Ke Konsumen



Update on Operation

- Create new feature "Contactless delivery" during COVID situation



Update on warehouse.

Precautious step by operation team midst COVID situation

- Workers and staffs operate shift system and divided into smaller group to minimize physical contact.
 - All parties obliged to use masker (and other preventive equipment) at the warehouse.
- All parties (vendor, worker, staffs) brief health check before entering the area.



Update on warehouse.

Precautious step by operation team midst COVID situation

Weekly disinfection warehouse, office area, and operation vehicle (logistics).
All commodities are covered with protective sheets



Policy and procedure development

To : TaniHub Group and its Subsidiary Employees
About : Corona Virus 19 Prevention Related with Operational
Date : 13 March 2020

In regards to Corona Virus (CoVid-19) outbreak that was started on Wuhan China and currently is happening in Indonesia, TaniHub Group as one of the raw food material provider towards Indonesian Customer wants that every product that were delivered is safe to be processed. Thus, we wants every warehouse to ensure the following guide is followed:

1. Every people that comes must be checked by using thermometer.
2. Every people that comes must be denied of entry to warehouse premises if they have the symptoms of flu, cold, coughing, or their body temperature exceed 37 degrees of celcius.
3. Employees that were found having similar symptoms with point 2, must be refered to the nearest local hospital and immediately quarantined.
4. Whenever a vendor have similar symptoms with point 2, all of their products will be denied of entry.
5. Coordination with Third-Party Logistic and internal driver will be maintained to ensure there are no disturbance when delivering our product.
6. Same-day service will be disabled for the meantime due to CoVid-19 until further notice.
7. Return or exchange policy will be disabled for the meantime due to CoVid-19 until further notice.
8. Warehouse staff shall maintain the previous standard of working with working attire consisting of hats, maskers, and gloves.
9. All products will be delivered in a sealed box to ensure there isn't any direct contact with the products.

This document will be effective from 13 March 2020.

We need your support and teamwork to reduce the CoVid-19 outbreak in Indonesia, whilst maintaining the food supply chain.

TaniHubgroup

Extraordinary Event – Outbreak
Standard
TH S-0099-1
V01_00

Tani Hub Group Indonesia

Management
Division

TaniHubgroup

Business Continuity Plan
Policy
TG P-0002

Tani Hub Group Indonesia

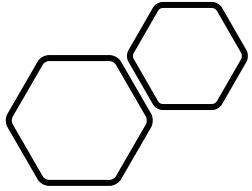
Management
Division

TaniHubgroup

Ketentuan bagi karyawan
yang bekerja dari rumah
(Work from Home)

TG S-0099-1 Extraordinary Events - Outbreak v01_00b





Kantor Pusat dan Cabang TaniHub Group

- Kantor Pusat
COHIVE 101 Lt.17
Jl. Mega Kuningan Barat Blok E.4.7 No.1 RT.5/RW.2, Kawasan Mega Kuningan
Kel. Kuningan Tim., Kec. Setiabudi, Kota Jakarta Selatan, Daerah Khusus Ibukota Jakarta 12950
- Gudang Bogor
Gedung M, Jl. Kedung Halang No.12A, RT.03/RW.11
Kel. Kedunghalang, Kec. Bogor Utara, Kota Bogor, Jawa Barat 16158
- Cabang Jawa Timur
Jl. Frontage Kav. 8A (Kompleks Woho)
Kel. Banjarkemantren, Kec. Buduran, Kab. Sidoarjo, Jawa Timur 61252
- Cabang Jawa Barat
Jl Jenderal Sudirman No.682
Kel. Cibuntu, Kec. Bandung Kulon, Kota Bandung, Jawa Barat 40212
- Cabang Jawa Tengah & Jogja
Jl. Kabupaten KM 2,5 No.8
Desa Trihanggo, Kec. Gamping, Kab. Sleman, Jawa Tengah 55291
- Cabang Bali
Jl. Gatot Subroto Barat No.168
Kel. Kerobokan Kaja, Kec. Kuta Utara, Kab. Badung, Bali 80117





Thank You

TaniHubgroup

Agriculture for Everyone