

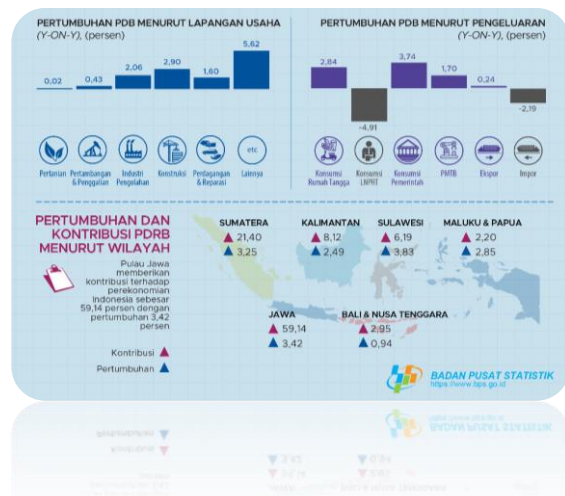


COVID-19 Impact to the Food Industry

Ir. Juan Permata Adoe, MBA
Wakil Ketua Umum Kadin Indonesia
Pengolahan Makanan, Industri Pertanian dan Industri Susu

1

Pertumbuhan Ekonomi Triwulan I-2020



Source: Berita Resmi Statistik No. 39/05/Th. XXIII, 5 Mei 2020

2

Tren Bisnis Pesan Antar Makanan (Online) Saat Pandemi Covid-19



Infografik produk di Tokopedia yang laris Maret 2020



3

Food Supply Chain



- Food Supply chain is a **complex** web of interactions and of actors: producers, inputs, transportation, processing plants, shipping, etc.
- As the virus spreads and cases mount, and block downs increase there are seemingly countless ways the food system will be tested and strained in the coming weeks and months.
- Today, no supply shock in sense of availability but there is starting to be a supply shock in terms of **logistics of movement of food**.
- Upstream staple supply chain less vulnerable because is capital intensive than high value supply chain



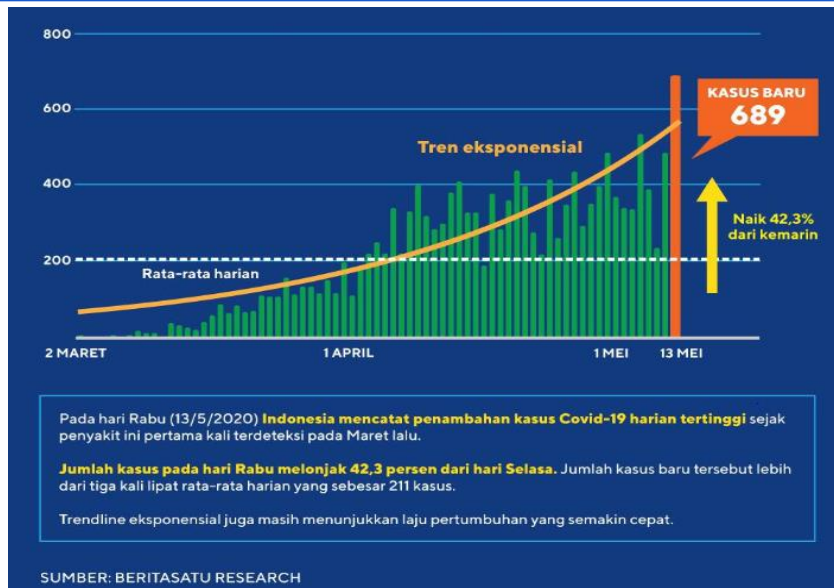
Food Systems Transformation

Source: FAO (Maximo Torero Cullen, Chief Economist)

4



Kasus Covid-19 Harian di Indonesia



5



TERIMA KASIH

Ir. Juan Permata Adoe, MBA

+62 81 814 8888 ✉ juan@kibif.com

www.kibif.com



6