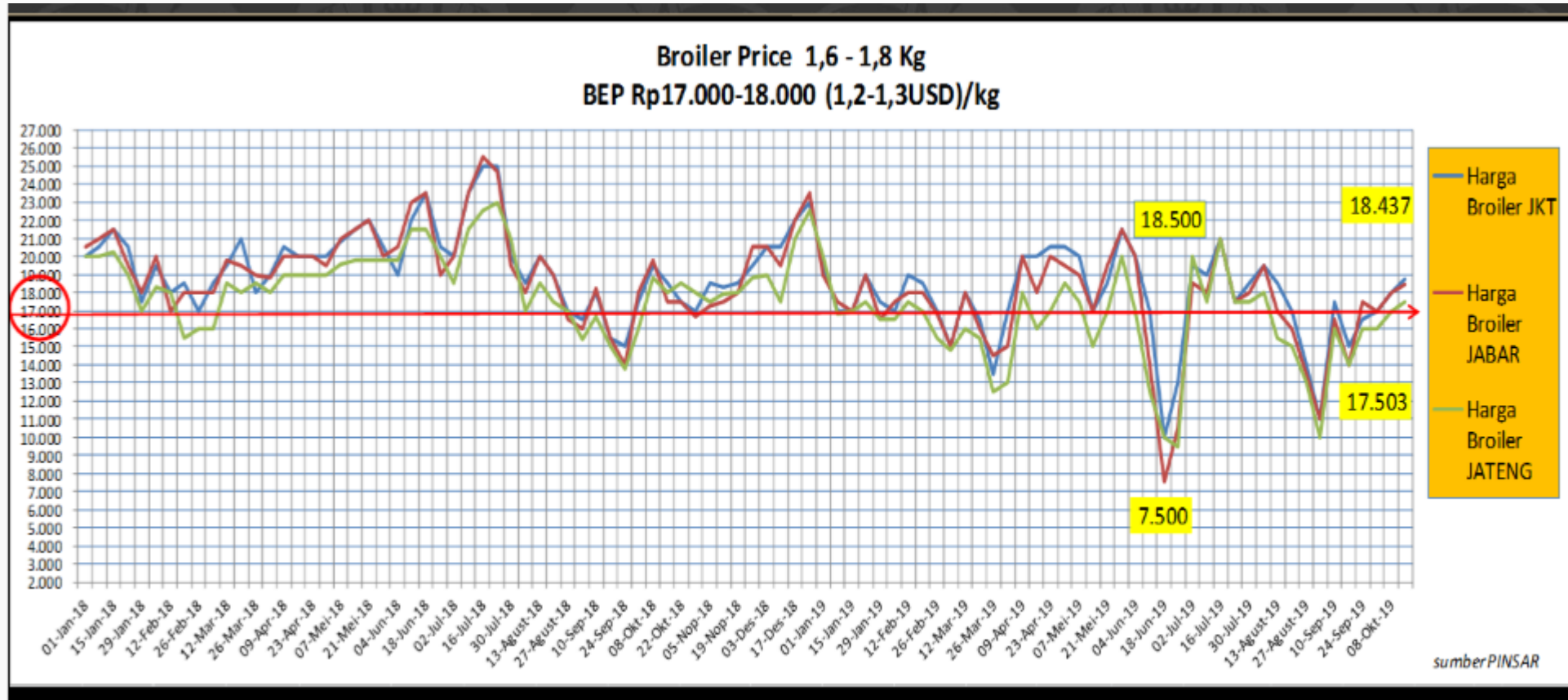


*POULTRYPRENEUR ACADEMY (PPA) #SERI3:*  
**MANAJEMEN TEKNIS PENDUKUNG  
PERUNGGASAN NASIONAL**

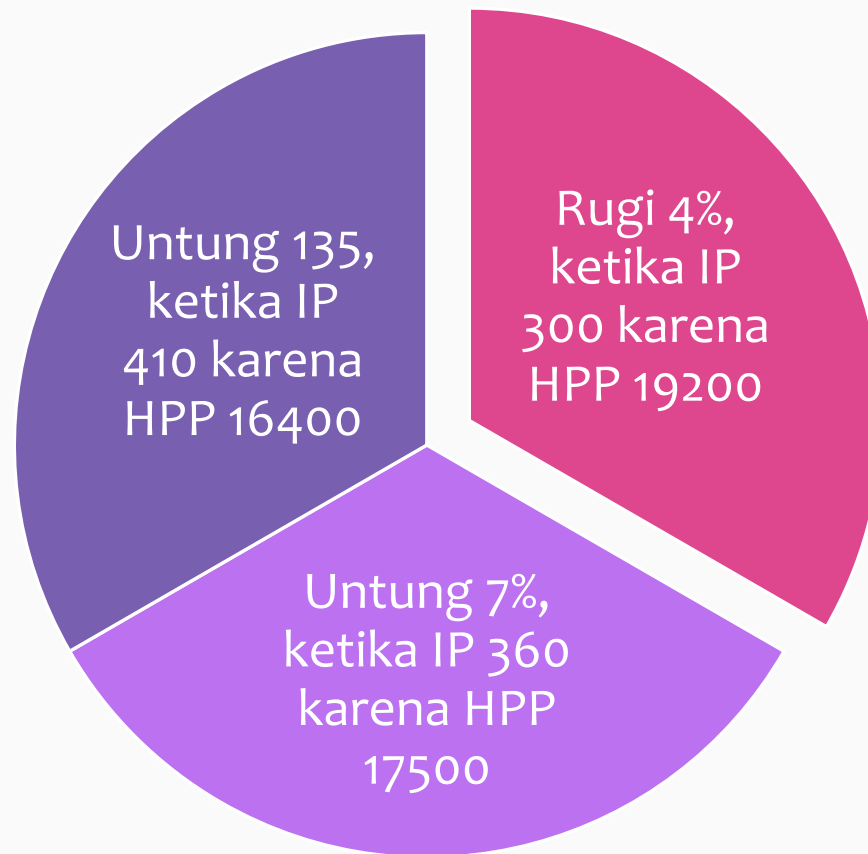
---

ZOOM, 12 APRIL 2021

WIRA WISNU



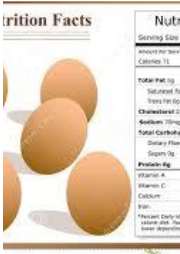
Komponen	%
DOC	21.9%
Feed	63.9%
Biaya Operasional	10.1%
Kandang	4.0%
Total	100.0%



# PROTEIN SOURCE FOR NEXT GENERATION ~ FEED



$\pm 1.60 - 1.80$



$\pm 2.0 - 2.20$



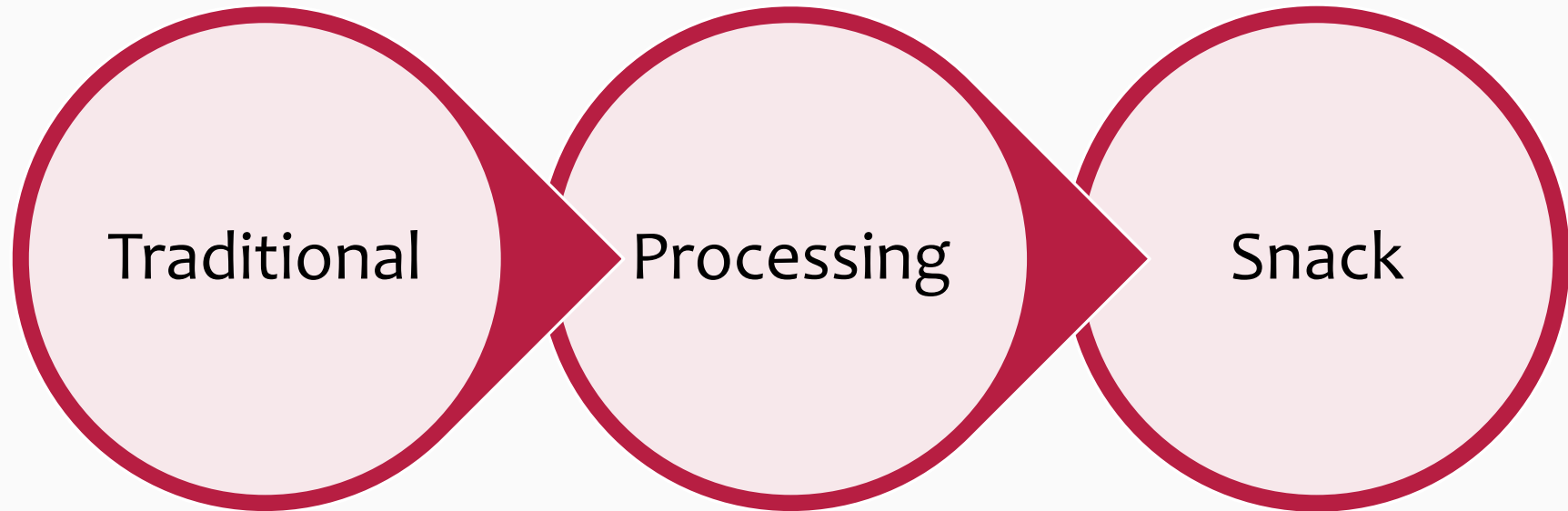
$\pm 5.0 - 9.0$



$\pm 1.30 - 1.90$



$\pm 1.10 - 1.70$



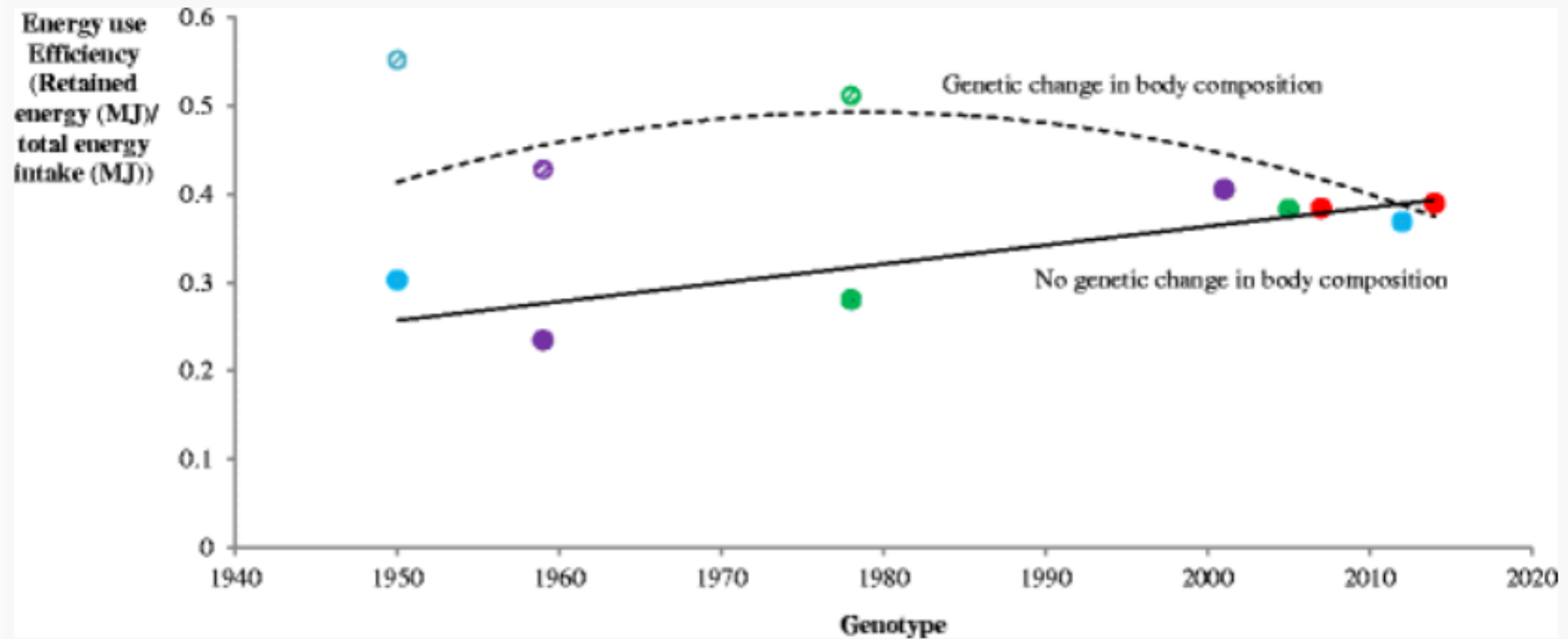
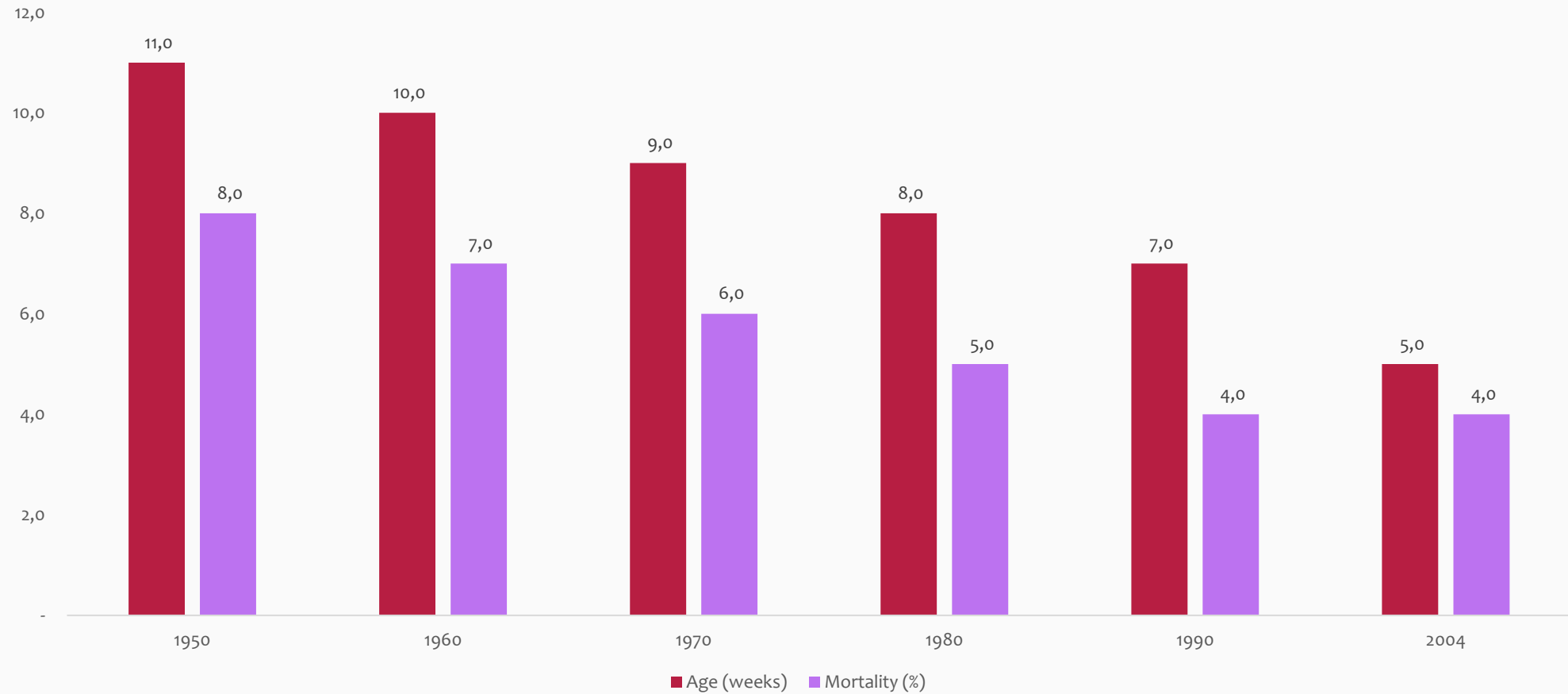


Fig. 3

- Tallentire, *et al.* 2016

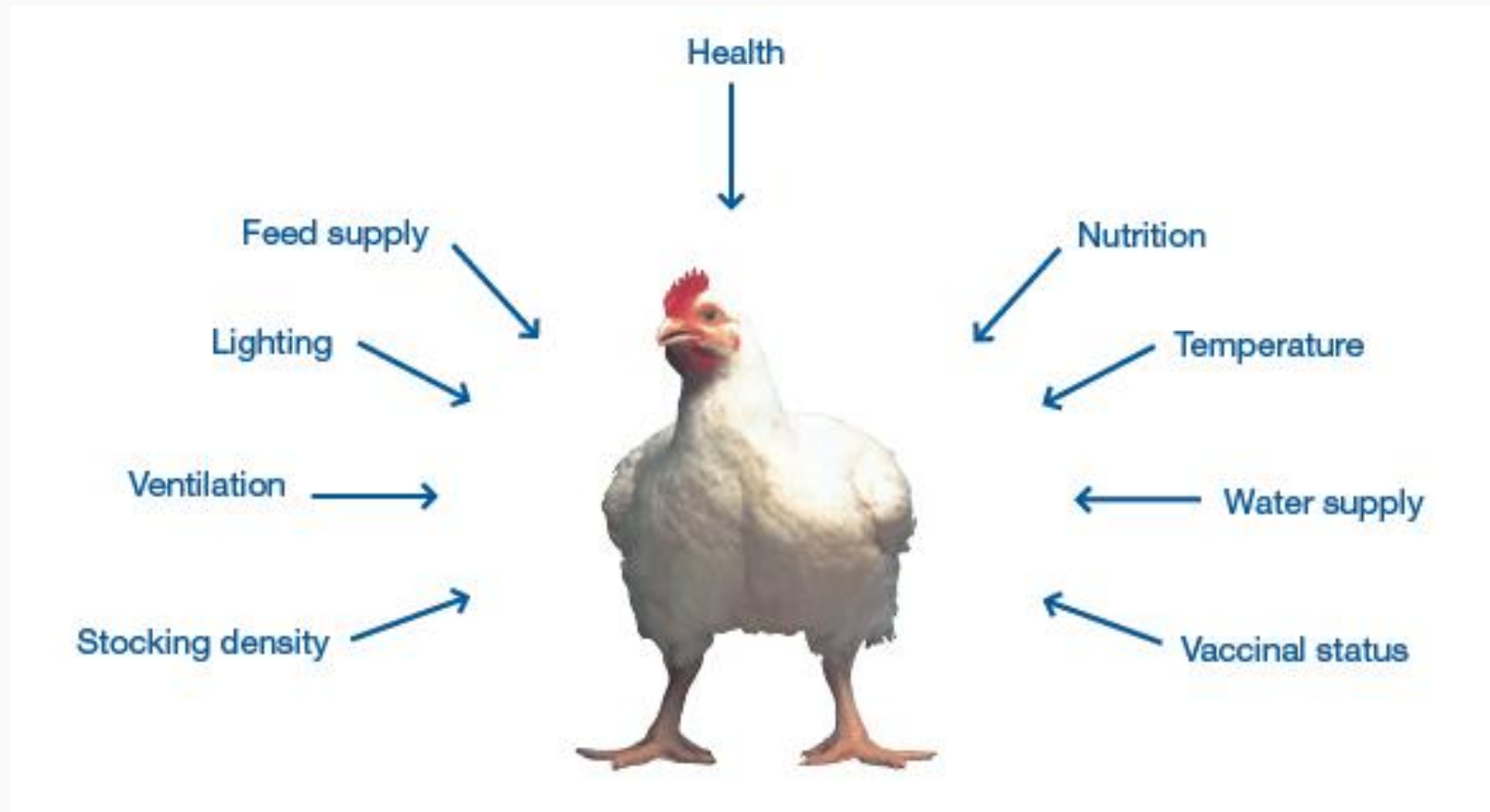
# GENETIC ARE MOVEMENT

Cobb Performans





# OPTIMALISE GENETIC POTENTIAL (ROSS GUIDELINE)

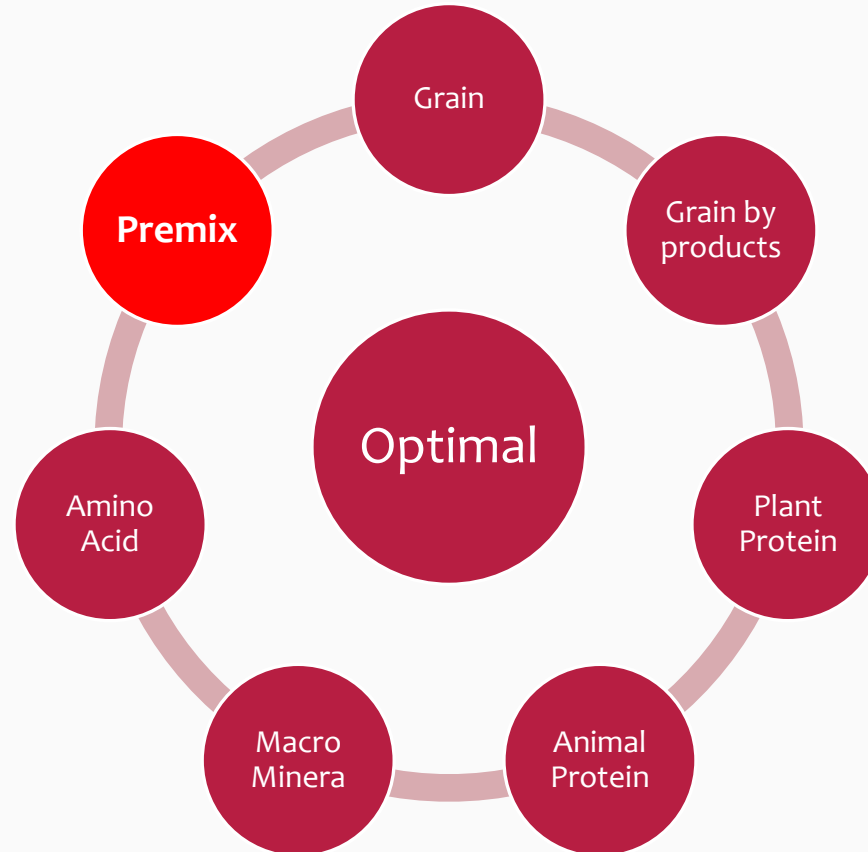


- ✓ Feeding requirement
- ✓ Environment and water management
- ✓ Farm management
- ✓ Diseases management

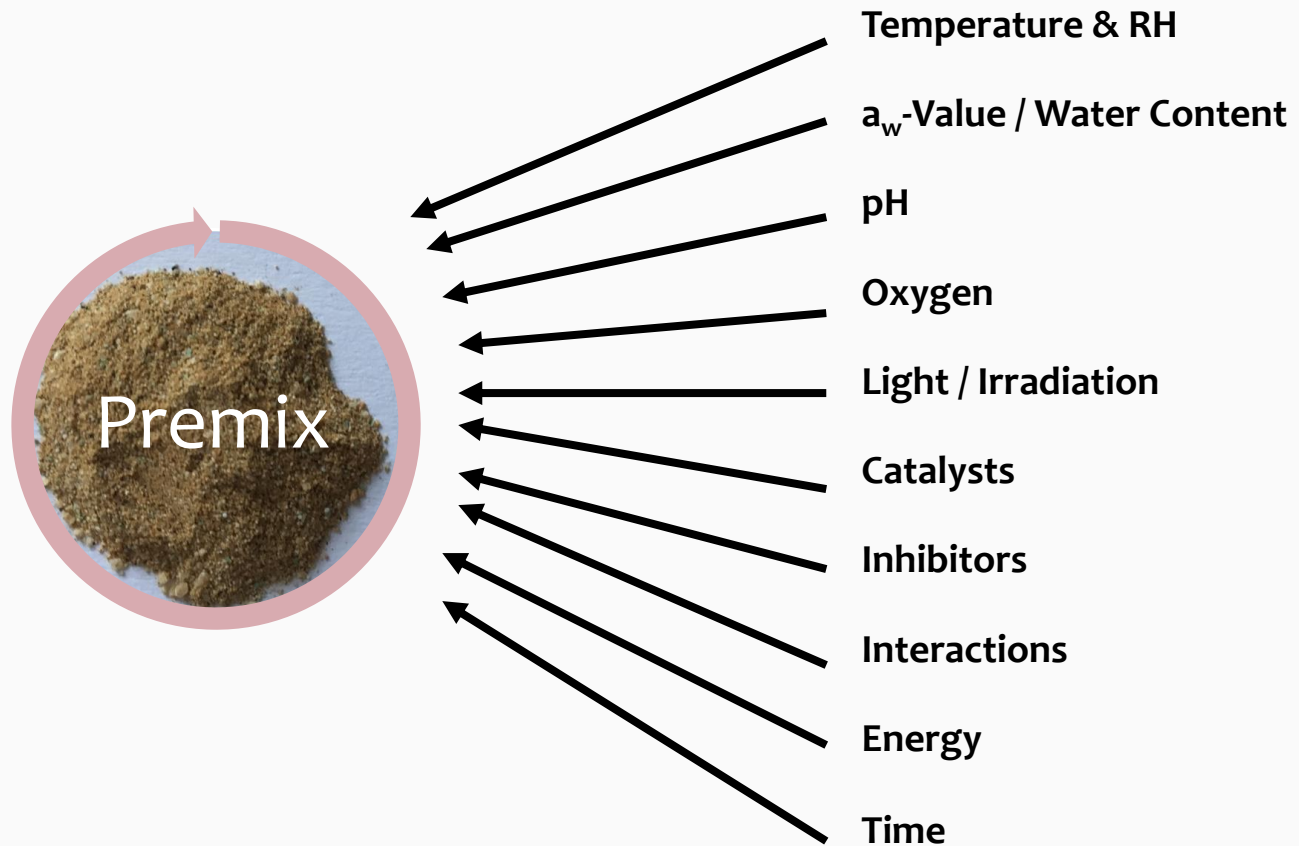
- Market price volatility
- Environment dynamic
- Policy update
- Raw material scarcity
- Competition and free trade
- IoT (Internet of Thing)



# BALANCE FEED COMPOSITION

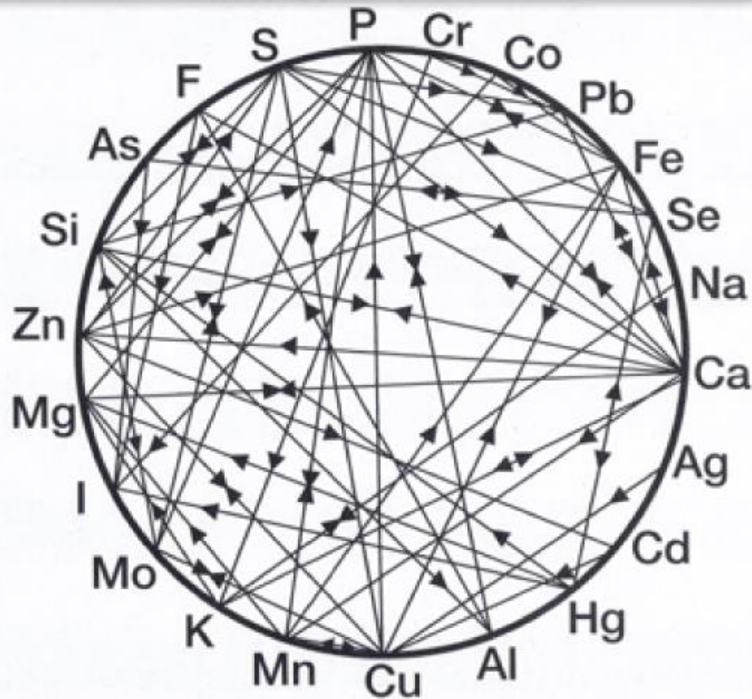






## Mineral Interactions

P - Phosphorus  
 Cr - Chromium  
 Co - Cobalt  
 Pb - Lead  
 Fe - Iron  
 Se - Selenium  
 Na - Sodium  
 Ca - Calcium  
 Ag - Silver  
 Cd - Cadmium  
 Hg - Mercury  
 Al - Aluminum  
 Cu - Copper  
 Mn - Manganese  
 K - Potassium  
 Mo - Molybdenum  
 I - Iodine  
 Mg - Magnesium  
 Zn - Zinc  
 Si - Silica  
 As - Arsenic  
 F - Fluorine  
 S - Sulfur



Direction of arrows denotes interference.

Arrows aimed at each other denote mineral synergy.

Arrows aimed away from each other denote mutual mineral interference or antagonism.

Source: <http://www.criticalelements.com.au/health.html>



- In Organic Mineral : sulphate or oxide or cl Based
- Chelate Mineral : single organic bound
- Organic Mineral : > 1 organic bound
- As is condition ~ investment ~ benefit

